

DECOR END

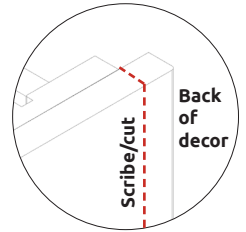
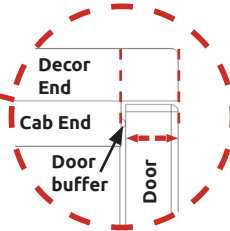
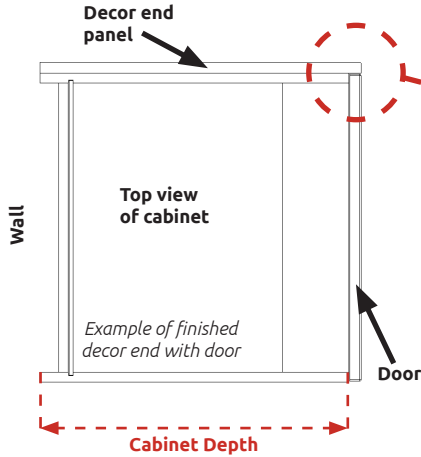
Fitting Guide

(H) x4 1 1/4" Screws



Step 1.

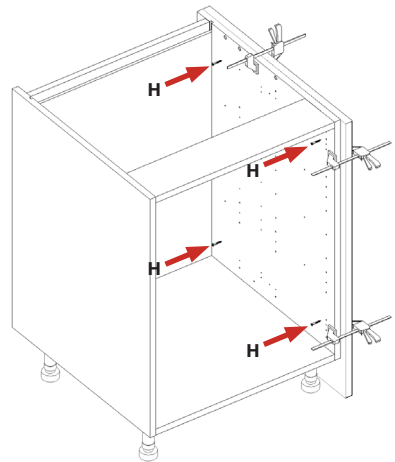
The depth of the decor end panel is the depth of the cabinet (customer specific) plus the thickness of the cabinet door (customer specific) plus 1/16" (2mm) for the door buffer. Scribe/cut the back of the decor end panel to the wall. If the height requires cutting/scrubing ensure it is done on the top edge.



BEFORE YOU START

INSTALLATION SHOULD BE PERFORMED BY A COMPETENT PERSON ONLY.

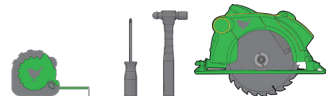
THIS PRODUCT COULD BE DANGEROUS IF INCORRECTLY INSTALLED.



Step 2.

Clamp decor end to cabinet and secure with 4 x 1 1/4" screws (H) provided. Screw just to the rear of the hinge plate and to the rear of the cabinet at the top and bottom. Place a cover cap on the head to conceal it.

REQUIRED TOOLS



Example of Cabinet with decor end.